

SRBC

SUSQUEHANNA RIVER
BASIN COMMISSION

NY ▪ PA ▪ MD ▪ USA

*Coordinated planning, management, and
conservation of the water resources of
the Susquehanna River Basin.*

Your River...Our Mission
GET TO KNOW US

www.srbc.gov

A federal-interstate compact, SRBC builds on five decades of achievements and fosters collaborative partnerships, coordinated action and use of the best science. Program activities align with four key areas:

Water Supply



Water use approvals are grounded in sound science and monitoring — with an eye toward ongoing water supply availability.

Water Quality



State-of-the-art water quality monitoring crosses jurisdictional boundaries. Partnership projects restore impaired streams and remedy harmful mine drainage.

Flooding & Drought



State-of-the-art flood warning system saves lives through early communications of rising river levels to affected communities. Drought planning focuses on protecting water supplies.

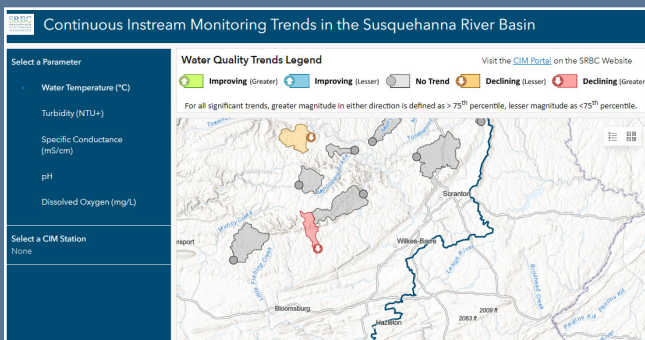
Watershed Management



Projects improve habitat and promote land use practices that support healthy aquatic ecosystems. Water withdrawal approvals include conditions to protect stream flows.

Guardian • Facilitator • Financial Supporter • Educator • Partner

Online Portals, Story Maps & Dashboards Interpret Scientific Data



The Continuous Instream Monitoring Dashboard provides water quality trends for all stations reflecting more than ten years of instream data.

Search for information about:

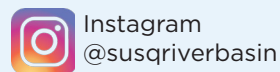
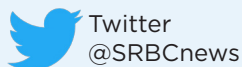
- status of water use projects
- **real-time water quality data for local streams**
- chemical data for parameters associated with mine drainage impacts
- **water use and availability for the basin's watersheds**
- nutrient and sediment pollutant monitoring
- **flood warning and preparedness**

making HEADLINES

See more at www.srb.gov/about/news

- SRBC scientists are using **eDNA (environmental DNA) to track invasive fish species** in the Susquehanna River Basin that may be harmful to native wildlife.
- SRBC continues the **Eels in the Classroom** program to complement ongoing restoration work occurring in the basin.
- The **Hydrologic Conditions Monitor** portal tracks status of water use projects that are impacted by weather and operating restrictions.
- With annual award totals of \$4 to \$6 million, **Consumptive Use Mitigation Grants** support projects that lessen the impacts of consumptive use and improve the availability and quality of water in the basin during droughts.
- A recently awarded **design contract for treatment of mine drainage** will vastly improve the water quality in the basin's Tioga River.
- **Groundwater use projects tap SRBC grants** to improve the collection and reporting of water level data in groundwater wells.

FOLLOW US ON:



CONTACT:

Gene G. Veno, Director Governmental Affairs & Public Advocacy
717-238-0423 Ext 1311 • gveno@srbc.gov

Subscribe to *The Guardian E-Newsletter*